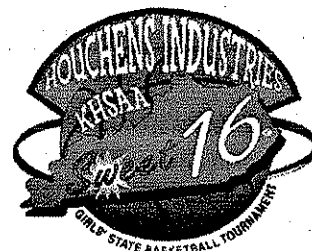


2005



**Houchens Industries/KHSAA
Girls' Sweet 16®
State Basketball Tournament**

**Final Game Stats
Session 5 ~ Game 2
Friday, March 25
South Laurel Cardinals
vs.
Montgomery County Indians**



**March 23-26
Diddle Arena
Bowling Green**

2005 HOUCHEMS INDUSTRIES/KHSAA GIRLS' SWEET 16 - Game Box Score

South Laurel Cardinals vs. Montgomery County Lady Indians

Date: 03/25/2005 Time: 2:30 PM CST Site: Diddle Arena-Bowling Green, KY Attendance: 4733

Visitors: Montgomery County Lady Indians

##	Name	P	FG	3 Pt	FT	PTS	ORB	DRB	TR	PF	AST	TO	BS	ST	MIN
3	K.K. Oaks		0/0	0/0	0/0	0	0	1	1	0	0	0	0	0	1:05
10	Katie Jo Thompson		0/1	0/1	0/0	0	0	0	0	0	0	0	0	0	0:10
11	* MacKenzie Lee		4/5	0/0	3/3	11	1	3	4	2	2	3	0	3	27:10
12	* Maggie Prewitt		3/12	2/6	7/10	15	0	2	2	3	1	8	0	2	27:06
14	* Jenna High		3/7	2/5	1/1	9	0	3	3	3	1	2	0	0	28:06
21	* Courtney Danis		7/12	0/0	4/8	18	3	3	6	0	2	5	0	2	28:18
22	Sherry McGuire		0/0	0/0	0/0	0	0	0	0	0	0	1	0	0	2:14
23	Karie Warner		0/0	0/0	1/2	1	1	0	1	1	0	1	0	0	9:59
24	* Amy Barnard		0/2	0/0	0/0	0	1	0	1	1	0	1	0	1	11:23
30	Hannah Baker		0/0	0/0	0/0	0	0	0	0	0	0	0	0	0	0:10
32	Natasha Thomas		1/3	0/0	0/1	2	0	0	0	4	0	0	1	1	15:46
33	Kayla Webb		1/1	0/0	0/2	2	2	2	4	1	2	0	0	1	8:13
42	Casey Greene		0/0	0/0	0/0	0	0	0	0	0	0	0	0	0	0:10
44	Brooke Coliver		0/0	0/0	0/0	0	0	0	0	0	0	0	0	0	0:10
	Team						2	1	3						
	Totals		19/43	4/12	16/27	58	10	15	25	15	8	21	1	10	160
	Total FG		1st Half	9/18	50.0%	2nd Half	10/25	40.0%	Game	19/43	44.2%				
	3 PT FG		1st Half	1/4	25.0%	2nd Half	3/8	37.5%	Game	4/12	33.3%				
	Free Throws		1st Half	7/13	53.8%	2nd Half	9/14	64.3%	Game	16/27	59.3%				

Home: South Laurel Cardinals

##	Name	P	FG	3 Pt	FT	PTS	ORB	DRB	TR	PF	AST	TO	BS	ST	MIN
4	* Whitney Smith		2/7	0/2	1/1	5	1	0	1	2	2	2	0	2	24:45
10	* Mallory Jones		6/11	0/2	1/1	13	0	0	0	3	4	5	0	2	28:56
12	Makenzie McWhorter		0/0	0/0	0/0	0	0	0	0	0	0	0	0	0	1:11
20	Lauren Wombles		1/3	0/0	2/3	4	0	2	2	1	4	2	0	0	21:13
21	Jamie Wyatt		0/0	0/0	0/0	0	0	1	1	0	0	0	0	0	1:11
22	Johnna Sizemore		1/1	0/0	0/0	2	0	1	1	1	0	1	0	0	1:31
23	* Taran Johnson		8/13	0/0	5/6	21	2	7	9	3	0	1	1	4	27:27
32	Devon Burchette		2/4	0/0	0/1	4	0	2	2	3	0	1	0	0	11:23
35	Kayla Valentine		0/0	0/0	0/0	0	0	0	0	1	0	0	0	0	3:53
40	* Amber Neace		10/12	0/0	1/1	21	5	3	8	4	3	2	0	3	24:45
43	Kayla Baker		0/0	0/0	0/0	0	0	0	0	0	0	0	0	0	1:30
54	* Brittany Turner		2/4	0/0	0/0	4	0	3	3	3	0	1	1	0	12:15
	Team						0	0	0			1			
	Totals		32/55	0/4	10/13	74	8	19	27	21	13	16	2	11	160
	Total FG		1st Half	18/28	64.3%	2nd Half	14/27	51.9%	Game	32/55	58.2%				
	3 PT FG		1st Half	0/2	0.00%	2nd Half	0/2	0.00%	Game	0/4	0.00%				
	Free Throws		1st Half	4/4	100%	2nd Half	6/9	66.7%	Game	10/13	76.9%				

	MONT	SL		MONT	SL		MONT	SL
Free Throw Pts	16	10	3Pt Points	12	0	Pts/Possession	0.87	1.09
Pts off Turnovers	14	27	2nd Chance Points	8	10	Pts off Bench	5	10
Total Rebounds	25	27	Team Rebounds	3	0	Dead Ball Reb	8	1
Off Rebound %	34.5	34.8	Def Rebound %	65.2	65.5	Total Rebound %	48.1	51.9
Technical Fouls	MONT	SL						
			None	None				
Officials	Samuel Smith, David Smithmier, Tonie Brown							

	Qtr 1	Qtr 2	Qtr 3	Qtr 4	OT 1	OT 2	OT 3	OT 4	Total
Montgomery County Lady Indians	14	12	18	14	0	0	0	0	58
South Laurel Cardinals	23	17	13	21	0	0	0	0	74

2005 HOUCHEMENS INDUSTRIES/KHSAA GIRLS' SWEET 16 - Play by Play Report - Period: 1 (pg 1)

South Laurel Cardinals vs. Montgomery County Lady Indians

Date: 03/25/2005 Time: 2:30 PM cst Site: Diddle Arena-Bowling Green, KY Attendance:

Name	Action	Action	Score	Clock	Diff	Name	Action	Action
4 W Smith	Start Game					11 M Lee	Start Game	
10 M Jones	Start Game					12 M Prewitt	Start Game	
23 T Johnson	Start Game					14 J High	Start Game	
40 A Neace	Start Game					21 C Danis	Start Game	
54 B Turner	Start Game					24 A Barnard	Start Game	
A Neace	Jump Ball Win			1 7:58		C Danis	Jump Ball Loss	
T Johnson	FG Made	M Jones Assist	2-0	1 7:54	+2			
B Turner	Personal Foul		2-1	1 7:44	+1	C Danis	FT Made	
			2-2	1 7:44	(T1)	C Danis	FT Made	
A Neace	Layup Made	W Smith Assist	4-2	1 7:32	+2			
			4-4	1 7:17	(T2)	C Danis	FG Made	M Lee Assist
W Smith	Turnover	(Traveling)		1 7:06				
				1 6:48		C Danis	Turnover	(Bad Pass)
T Johnson	Steal			1 6:47				
M Jones	FG Made	A Neace Assist	6-4	1 6:42	+2			
T Johnson	Def Rebound			1 6:31		M Prewitt	FG Attempt	
B Turner	FG Made		8-4	1 6:18	+4			
				1 6:02		M Lee	Turnover	(Fumble)
B Turner	FG Attempt			1 5:52		M Lee	Def Rebound	
				1 5:44		C Danis	Turnover	
A Neace	Steal			1 5:43				
A Neace	FG Made		10-4	1 5:42	+6			
				1 5:42		MONT	Partial Time Out	
				1 5:42		M Prewitt	Leave Game	
				1 5:42		S McGuire	Enter Game	for A Barnard
				1 5:42		N Thomas	Enter game	
M Jones	3Pt Attempt		10-6	1 5:25	+4	N Thomas	FG Made	C Danis Assist
A Neace	Def Rebound			1 5:04		C Danis	Def Rebound	
M Jones	Layup Made		12-6	1 4:55	+6	C Danis	FG Attempt	
B Turner	Def Rebound			1 4:20		N Thomas	FG Attempt	
				1 4:18		M Lee	Personal Foul	
				1 4:18		M Lee	Leave Game	
				1 4:18		M Prewitt	Enter Game	for S McGuire
				1 4:18		K Warner	Enter game	
D Burchette	Enter Game	for B Turner		1 4:18				
W Smith	3Pt Attempt	A Neace Off Reb		1 4:02				
A Neace	Putback Made		14-6	1 3:59	+8			
			14-9	1 3:49	+5	J High	3Pt Made	
W Smith	FG Made		16-9	1 3:37	+7			
				1 3:37		K Warner	Personal Foul	
L Wombles	Enter Game	for A Neace		1 3:37				
W Smith	FT Made		17-9	1 3:37	+8			
			17-11	1 3:18	+6	C Danis	FG Made	
D Burchette	FG Made	L Wombles Assist	19-11	1 3:09	+8			
				1 2:59		M Prewitt	Turnover	
	Official Time Out			1 2:59			Official Time Out	
W Smith	FG Made	L Wombles Assist	21-11	1 2:46	+10			
				1 2:17		J High	3Pt Attempt	C Danis Off Reb
			21-13	1 2:15	+8	C Danis	Putback Made	
B Turner	Enter Game	for D Burchette		1 2:07				
M Jones	Turnover	(Bad Pass)		1 1:50		M Lee	Enter Game	for J High
				1 1:49		C Danis	Steal	
				1 1:45		C Danis	FG Attempt	K Warner Off Reb
B Turner	Personal Foul			1 1:44				
A Neace	Enter Game	for B Turner		1 1:44				
				1 1:44		K Warner	FT Attempt	MONT Deadball Reb
			21-14	1 1:44	+7	K Warner	FT Made	
M Jones	Turnover			1 1:31				
D Burchette	Enter Game	for T Johnson		1 1:17				

2005 HOUCHEMS INDUSTIRES/KHSAA GIRLS' SWEET 16 - Play by Play Report - Period: 1 (pg 2)

South Laurel Cardinals vs. Montgomery County Lady Indians

Date: 03/25/2005 Time: 2:30 PM cst Site: Diddle Arena-Bowling Green, KY Attendance:

Name	Action	Action	Score	Clock	Diff	Name	Action	Action
				1 1:05		M Lee	Turnover	(Bad Pass)
W Smith	Steal			1 1:03				
				1 1:03		N Thomas	Personal Foul	
				1 1:03		A Barnard	Enter Game	for N Thomas
A Neace	FG Made	W Smith Assist	23-14	1 0:33	+9			
D Burchette	Def Rebound			1 0:16		A Barnard	FG Attempt	
A Neace	Turnover	(Bad Pass)		1 0:02				
				1 0:01		M Lee	Steal	

End of Period Summary Cardinals 23 Lady Indians 14

Largest Lead: Cardinals 21 Lady Indians 11 (10 pts)

Lead in Period: Cardinals 21 Lady Indians 11 (10 pts)

4 for 1 oppo pts

1 for 2 pts

11/14 for 78.6 %

1/1 for 100 %

Turnovers

2nd Chances

Field Goals

Free Throws

Lead Changes: 0 Ties: 2

Lead Changes: 0 Ties: 2 (this period)

5 for 8 oppo pts

2 for 3 pts

5/11 for 45.5 %

3/4 for 75.0 %

2005 HOUCHEHS INDUSTIRES/KHSAA GIRLS' SWEET 16 - Play by Play Report - Period: 2 (pg 1)

South Laurel Cardinals vs. Montgomery County Lady Indians

Date: 03/25/2005 Time: 2:30 PM cst Site: Diddle Arena-Bowling Green, KY Attendance:

Name	Action	Action	Score	Clock	Diff	Name	Action	Action
				2 8:00		J High	Enter Game	for K Warner
				2 8:00		N Thomas	Enter Game	for A Barnard
T Johnson	Enter Game	for L Wombles		2 8:00				
D Burchette	Personal Foul		23-16	2 7:51				
M Jones	FG Attempt			2 7:50	+7	C Danis	FG Made	M Prewitt Assist
M Jones	Personal Foul			2 7:32		N Thomas	Block	M Lee Def Reb
L Wombles	Enter Game	for M Jones		2 7:21				
				2 7:02		M Prewitt	Turnover	(Bad Pass)
D Burchette	Turnover	(Fumble)		2 6:44		M Lee	Personal Foul	
				2 6:24				
A Neace	Def Rebound			2 6:23		M Prewitt	Steal	
A Neace	FG Attempt	T Johnson Off Reb		2 6:00		J High	3Pt Attempt	
T Johnson	Turnover	(Traveling)		2 5:49				
M Jones	Enter Game	for W Smith		2 5:48				
				2 5:48		S McGuire	Enter Game	for M Prewitt
T Johnson	Personal Foul			2 5:31				
SL	Partial Time Out			2 5:31				
				2 5:31		C Danis	FT Attempt	MONT Deadball Reb
				2 5:31		C Danis	FT Attempt	MONT Off Reb
				2 5:09		C Danis	Turnover	(Fumble)
M Jones	Steal			2 5:07				
M Jones	Layup Made		25-16	2 5:06	+9			
				2 4:58		S McGuire	Turnover	(Palming)
				2 4:58		C Danis	Leave Game	
				2 4:58		M Prewitt	Enter Game	for S McGuire
				2 4:58		K Webb	Enter game	
A Neace	FG Made	M Jones Assist	27-16	2 4:47	+11			
				2 4:26		M Prewitt	3Pt Attempt	M Lee Off Reb
D Burchette	Personal Foul			2 4:25				
K Valentine	Enter Game	for D Burchette		2 4:25				
				2 4:25	+10	M Lee	FT Made	
				2 4:25	+9	M Lee	FT Made	
T Johnson	FG Attempt			2 4:07		K Webb	Def Rebound	
				2 4:00	+7	M Lee	Layup Made	K Webb Assist
M Jones	FG Made		29-20	2 3:41	+9			
M Jones	FT Made		30-20	2 3:41	+10	J High	Personal Foul	
A Neace	Leave Game			2 3:41				
				2 3:41		C Danis	Enter Game	for K Webb
W Smith	Enter game			2 3:41				
				2 3:21	+8	M Prewitt	Layup Made	
M Jones	Turnover	(Bad Pass)		2 3:16				
K Valentine	Personal Foul			2 3:00				
D Burchette	Enter Game	for L Wombles		2 3:00				
				2 3:00		M Prewitt	FT Attempt	MONT Deadball Reb
				2 3:00	+7	M Prewitt	FT Made	
	Official Time Out			2 2:48			Official Time Out	
A Neace	Enter Game	for K Valentine		2 2:48				
T Johnson	FG Attempt	A Neace Off Reb		2 2:35				
A Neace	Putback Made		32-23	2 2:33	+9			
				2 2:24		M Prewitt	Turnover	
				2 2:24		M Prewitt	Personal Foul	
D Burchette	FG Attempt			2 2:20		MONT	Def Rebound	(Dead Ball Reb)
A Neace	Personal Foul			2 2:20				
T Johnson	Def Rebound			2 2:20		N Thomas	FT Attempt	
				2 2:10		N Thomas	Personal Foul	
L Wombles	Enter Game	for D Burchette		2 2:10				
				2 2:10		M Lee	Leave Game	
				2 2:10		K Warner	Enter Game	for N Thomas
				2 2:10		A Barnard	Enter game	

2005 HOUCHENS INDUSTIRES/KHSAA GIRLS' SWEET 16 - Play by Play Report - Period: 2 (pg 2)

South Laurel Cardinals vs. Montgomery County Lady Indians

Date: 03/25/2005 Time: 2:30 PM cst Site: Diddle Arena-Bowling Green, KY Attendance:

Name	Action	Action	Score	Clock	Diff	Name	Action	Action
T Johnson	FT Made		33-23	2 2:10	+10			
T Johnson	FT Made		34-23	2 2:10	+11			
T Johnson	Def Rebound			2 1:31		C Danis	FG Attempt	
L Wombles	FG Attempt	A Neace Off Reb		2 1:23				
A Neace	Putback Made		36-23	2 1:21	+13			
				2 1:10		M Prewitt	Turnover	(Bad Pass)
T Johnson	Steal			2 1:09				
M Jones	FG Made	A Neace Assist	38-23	2 0:52	+15			
L Wombles	Personal Foul			2 0:43				
				2 0:43		C Danis	FT Attempt	MONT Deadball Reb
			38-24	2 0:43	+14	C Danis	FT Made	
T Johnson	FG Made		40-24	2 0:32	+16			
K Baker	Enter Game	for T Johnson		2 0:19				
			40-26	2 0:15	+14	C Danis	FG Made	
W Smith	FG Attempt			2 0:02		MONT	Def Rebound	

End of Period Summary Cardinals 40 Lady Indians 26

Largest Lead: Cardinals 40 Lady Indians 24 (16 pts)

Lead in Period: Cardinals 40 Lady Indians 24 (16 pts)

3 for 3 oppo pts

3 for 4 pts

7/14 for 50.0 %

3/3 for 100 %

Turnovers

2nd Chances

Field Goals

Free Throws

Lead Changes: 0 Ties: 2

Lead Changes: 0 Ties: 0 (this period)

5 for 6 oppo pts

2 for 2 pts

4/7 for 57.1 %

4/9 for 44.4 %

2005 HOUCHENS INDUSTRIES/KHSAA GIRLS' SWEET 16 - Game Box Score

South Laurel Cardinals vs. Montgomery County Lady Indians

Date: 03/25/2005 Time: 2:30 PM cst Site: Diddle Arena-Bowling Green, KY Attendance: Unknown

Visitors: Montgomery County Lady Indians

##	Name	P	FG	3 Pt	FT	PTS	ORB	DRB	TR	PF	AST	TO	BS	ST	MIN
3	K.K. Oaks														DNP
10	Katie Jo Thompson														DNP
11	* MacKenzie Lee		1/1	0/0	2/2	4	1	2	3	2	1	2	0	1	11:39
12	* Maggie Prewitt		1/3	0/1	1/2	3	0	0	0	1	1	4	0	1	13:46
14	* Jenna High		1/3	1/3	0/0	3	0	0	0	1	0	0	0	0	13:53
21	* Courtney Danis		5/8	0/0	3/6	13	1	1	2	0	1	3	0	1	14:43
22	Sherry McGuire		0/0	0/0	0/0	0	0	0	0	0	0	1	0	0	2:14
23	Karie Warner		0/0	0/0	1/2	1	1	0	1	1	0	0	0	0	6:28
24	* Amy Barnard		0/1	0/0	0/0	0	0	0	0	0	0	0	0	0	5:31
30	Hannah Baker														DNP
32	Natasha Thomas		1/2	0/0	0/1	2	0	0	0	2	0	0	1	0	10:29
33	Kayla Webb		0/0	0/0	0/0	0	0	1	1	0	1	0	0	0	1:17
42	Casey Greene														DNP
44	Brooke Coliver														DNP
	Team						1	1	2						
	Totals		9/18	1/4	7/13	26	4	5	9	7	4	10	1	3	80
	Total FG		1st Half	9/18	50.0%	2nd Half	0/0	0.00%	Game	9/18	50.0%				
	3 PT FG		1st Half	1/4	25.0%	2nd Half	0/0	0.00%	Game	1/4	25.0%				
	Free Throws		1st Half	7/13	53.8%	2nd Half	0/0	0.00%	Game	7/13	53.8%				

Home: South Laurel Cardinals

##	Name	P	FG	3 Pt	FT	PTS	ORB	DRB	TR	PF	AST	TO	BS	ST	MIN
4	* Whitney Smith		2/4	0/1	1/1	5	0	0	0	0	2	1	0	1	13:53
10	* Mallory Jones		5/7	0/1	1/1	11	0	0	0	1	2	3	0	1	14:27
12	Makenzie McWhorter														DNP
20	Lauren Wombles		0/1	0/0	0/0	0	0	0	0	1	2	0	0	0	10:08
21	Jamie Wyatt														DNP
22	Johnna Sizemore														DNP
23	* Taran Johnson		2/4	0/0	2/2	6	1	3	4	1	0	1	0	2	14:24
32	Devon Burchette		1/2	0/0	0/0	2	0	1	1	2	0	1	0	0	7:53
35	Kayla Valentine		0/0	0/0	0/0	0	0	0	0	1	0	0	0	0	1:37
40	* Amber Neace		7/8	0/0	0/0	14	3	2	5	1	2	1	0	1	13:14
43	Kayla Baker		0/0	0/0	0/0	0	0	0	0	0	0	0	0	0	0:19
54	* Brittany Turner		1/2	0/0	0/0	2	0	1	1	2	0	0	0	0	4:05
	Team						0	0	0						
	Totals		18/28	0/2	4/4	40	4	7	11	9	8	7	0	5	80
	Total FG		1st Half	18/28	64.3%	2nd Half	0/0	0.00%	Game	18/28	64.3%				
	3 PT FG		1st Half	0/2	0.00%	2nd Half	0/0	0.00%	Game	0/2	0.00%				
	Free Throws		1st Half	4/4	100%	2nd Half	0/0	0.00%	Game	4/4	100%				

	MONT	SL		MONT	SL		MONT	SL
Free Throw Pts	7	4	3Pt Points	3	0	Pts/Possession	0.84	1.25
Pts off Turnovers	4	14	2nd Chance Points	5	6	Pts off Bench	3	2
Total Rebounds	9	11	Team Rebounds	2	0	Dead Ball Reb	5	1
Off Rebound %	36.4	44.4	Def Rebound %	55.6	63.6	Total Rebound %	45.0	55.0
Technical Fouls	MONT	None						
	SL	None						
Officials	Samuel Smith, David Smithmier, Tonie Brown							

	Qtr 1	Qtr 2	Qtr 3	Qtr 4	OT 1	OT 2	OT 3	OT 4	Total
Montgomery County Lady Indians	14	12	0	0	0	0	0	0	26
South Laurel Cardinals	23	17	0	0	0	0	0	0	40

2005 HOUCHENS INDUSTIRES/KHSAA GIRLS' SWEET 16 - Play by Play Report - Period: 4 (pg 1)

South Laurel Cardinals vs. Montgomery County Lady Indians

Date: 03/25/2005 Time: 2:30 PM CST Site: Diddle Arena-Bowling Green, KY Attendance:

Name	Action	Action	Score	Clock	Diff	Name	Action	Action
M Jones	Enter Game	for J Sizemore		4 8:00				
W Smith	Leave Game			4 8:00				
T Johnson	Enter Game	for D Burchette		4 8:00				
B Turner	Enter game			4 8:00				
M Jones	Turnover			4 7:54				
				4 7:53		M Lee	Steal	
			53-46	4 7:52	+7	M Lee	Layup Made	
M Jones	Personal Foul		53-47	4 7:51	+6	M Lee	FT Made	
T Johnson	FT Made		54-47	4 7:41	+7	A Barnard	Personal Foul	
T Johnson	FT Made		55-47	4 7:41	+8			
T Johnson	Block			4 7:32		M Prewitt	FG Attempt	MONT Off Reb
B Turner	Def Rebound			4 7:23		C Danis	FG Attempt	
L Wombles	FG Made	M Jones Assist	57-47	4 7:14	+10			
A Neace	Personal Foul			4 7:02				
W Smith	Enter Game	for A Neace		4 7:02				
				4 7:02		N Thomas	Enter Game	for A Barnard
			57-48	4 7:02	+9	M Prewitt	FT Made	
			57-49	4 7:02	+8	M Prewitt	FT Made	
B Turner	FG Attempt			4 6:54		C Danis	Def Rebound	
T Johnson	Def Rebound			4 6:46		M Prewitt	3Pt Attempt	
				4 6:46		N Thomas	Personal Foul	
W Smith	FG Attempt			4 6:22		J High	Def Rebound	
				4 6:14		J High	Turnover	
M Jones	Steal			4 6:13				
M Jones	Layup Made		59-49	4 6:12	+10			
B Turner	Block	B Turner Def Reb		4 5:53		N Thomas	FG Attempt	
B Turner	Turnover			4 5:34				
				4 5:34		N Thomas	Steal	
W Smith	Personal Foul			4 5:28				
D Burchette	Enter Game	for B Turner		4 5:28				
				4 5:28		A Barnard	Enter Game	for N Thomas
			59-50	4 5:28	+9	M Prewitt	FT Made	
L Wombles	Def Rebound			4 5:28		M Prewitt	FT Attempt	
D Burchette	FG Made		61-50	4 5:21	+11			
				4 5:21		M Prewitt	Personal Foul	
				4 5:21		K Oaks	Enter Game	for J High
D Burchette	FT Attempt			4 5:21		K Oaks	Def Rebound	
T Johnson	Def Rebound			4 5:15		A Barnard	FG Attempt	
T Johnson	FG Made		63-50	4 4:49	+13			
			63-53	4 4:44	+10	M Prewitt	3Pt Made	
				4 4:26		MONT	Partial Time Out	
				4 4:26		K Warner	Enter Game	for K Oaks
T Johnson	FG Made		65-53	4 4:05	+12			
				4 3:56		C Danis	Turnover	(Bad Pass)
W Smith	Steal			4 3:56				
D Burchette	Layup Att			4 3:52		C Danis	Def Rebound	
				4 3:48		M Prewitt	3Pt Attempt	C Danis Off Reb
				4 3:44				
T Johnson	Personal Foul			4 3:44				
W Smith	Leave Game			4 3:44				
A Neace	Enter Game	for D Burchette		4 3:44				
B Turner	Enter game			4 3:44				
				4 3:44		K Warner	Leave Game	
				4 3:44		J High	Enter Game	for A Barnard
				4 3:44		N Thomas	Enter game	
				4 3:44		C Danis	FT Attempt	MONT Deadball Reb
			65-54	4 3:44	+11	C Danis	FT Made	
A Neace	Layup Made	L Wombles Assist	67-54	4 3:30	+13			
L Wombles	Def Rebound			4 3:12		M Prewitt	3Pt Attempt	
				4 3:00				
T Johnson	FG Attempt	A Neace Off Reb		4 2:54				
A Neace	Putback Made		69-54	4 2:49	+15			

2005 HOUCHEM INDUSTRIES/KHSAA GIRLS' SWEET 16 - Play by Play Report - Period: 4 (pg 2)

South Laurel Cardinals vs. Montgomery County Lady Indians

Date: 03/25/2005 Time: 2:30 PM CST Site: Diddle Arena-Bowling Green, KY Attendance:

Name	Action	Action	Score	Clock	Diff	Name	Action	Action
A Neace	Layup Made	L Wombles Assist	71-54	4 2:30		M Prewitt	Turnover	(Fumble)
				4 2:16	+17	N Thomas	Personal Foul	
	Official Time Out			4 2:16			Official Time Out	
K Valentine	Enter Game	for B Turner		4 2:16		K Webb	Enter Game	for N Thomas
A Neace	FT Made		72-54	4 2:16	+18			
				4 2:12		M Prewitt	Turnover	(Bad Pass)
				4 2:04		J High	Personal Foul	
L Wombles	FT Attempt			4 2:04		K Webb	Def Rebound	
T Johnson	Personal Foul			4 2:03				
				4 2:03		K Webb	FT Attempt	MONT Deadball Reb
T Johnson	Def Rebound			4 2:03		K Webb	FT Attempt	K Webb Off Reb
L Wombles	Turnover	(Bad Pass)		4 1:47		M Prewitt	FG Attempt	
				4 1:18				
			72-56	4 1:17		C Danis	Steal	
				4 1:12	+16	M Lee	Layup Made	K Webb Assist
				4 1:11		MONT	Time Out	
M Jones	Leave Game			4 1:11				
L Wombles	Leave Game			4 1:11				
T Johnson	Leave Game			4 1:11				
K Valentine	Leave Game			4 1:11				
M McWhorter	Enter Game	for A Neace		4 1:11				
K Baker	Enter game			4 1:11				
J Sizemore	Enter game			4 1:11				
J Wyatt	Enter game			4 1:11				
K Valentine	Enter game			4 1:11				
SL	Turnover	(10 Sec Violation)		4 1:01				
J Wyatt	Def Rebound			4 0:54		C Danis	FG Attempt	
J Sizemore	Turnover	(Bad Pass)		4 0:45				
			72-58	4 0:44		M Prewitt	Steal	
				4 0:41	+14	K Webb	FG Made	J High Assist
J Sizemore	Layup Made		74-58	4 0:14	+16			
				4 0:10		MONT	Time Out	
				4 0:10		M Lee	Leave Game	
				4 0:10		M Prewitt	Leave Game	
				4 0:10		J High	Leave Game	
				4 0:10		C Danis	Leave Game	
				4 0:10		C Greene	Enter Game	for K Webb
				4 0:10		B Coliver	Enter game	
				4 0:10		H Baker	Enter game	
				4 0:10		K Oaks	Enter game	
				4 0:10		K J Thompson	Enter game	
J Sizemore	Def Rebound			4 0:01		K J Thompson	3Pt Attempt	

End of Period Summary Cardinals 74 Lady Indians 58

Largest Lead: Cardinals 72 Lady Indians 54 (18 pts)

Lead in Period: Cardinals 72 Lady Indians 54 (18 pts)

5 for 8 oppo pts

1 for 2 pts

9/13 for 69.2 %

3/5 for 60.0 %

Turnovers

2nd Chances

Field Goals

Free Throws

Lead Changes: 0 Ties: 2

Lead Changes: 0 Ties: 0 (this period)

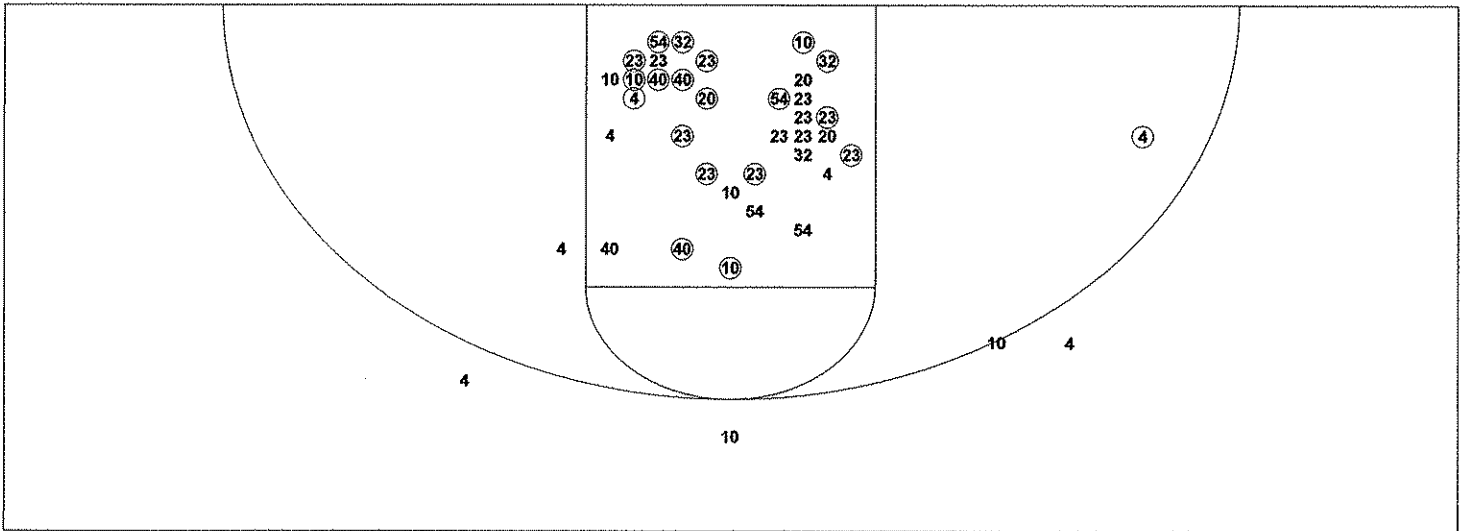
4 for 5 oppo pts

3 for 1 pts

4/14 for 28.6 %

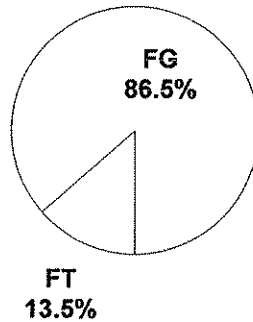
5/9 for 55.6 %

2005 HOUCHENS INDUSTRIES/KHSAA GIRLS' SWEET 16 - TEAM SHOT CHART for the South Laurel Cardinals
South Laurel Cardinals vs. Montgomery County Lady Indians
DATE: 03/25/2005 TIME: 2:30 PM CST SITE: Diddle Arena-Bowling Green, KY

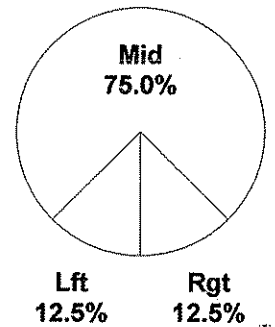


Shot Summary	M/A	%	PTS
3Pt FG	0/4	0.0%	0
2Pt FG	32/51	62.7%	64
Layups - L	4/5	80.0%	8
Layups - R	3/4	75.0%	6
Dunks	0/0	0.0%	0
Putbacks	5/6	83.3%	10
Overall Shooting	32/55	58.2%	64
Free Throws	10/13	76.9%	10
Total Points			74

Scoring Distribution

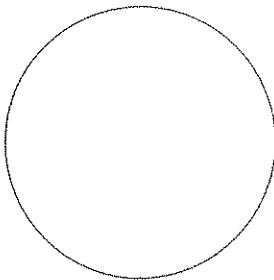


Scoring Locations

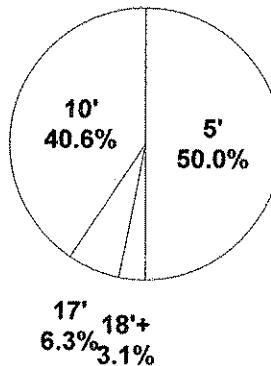


By Period	FG	FGA	FG%	3Pt	3PA	3P%	FT	FTA	FT%	PTS	ORB	DRB	TR	PF	AST	TO	BS	ST	P/S
1st Period	11	14	78.6	0	2	0.00	1	1	100	23	1	4	5	2	6	4	0	3	1.64
2nd Period	7	14	50.0	0	0	0.00	3	3	100	17	3	3	6	7	2	3	0	2	1.13
3rd Period	5	14	35.7	0	2	0.00	3	4	75.0	13	3	3	6	7	2	4	0	4	0.81
4th Period	9	13	69.2	0	0	0.00	3	5	60.0	21	1	9	10	5	3	5	2	2	1.40
Game	32	55	58.2	0	4	0.00	10	13	76.9	74	8	19	27	21	13	16	2	11	1.21

Scoring Breakdown



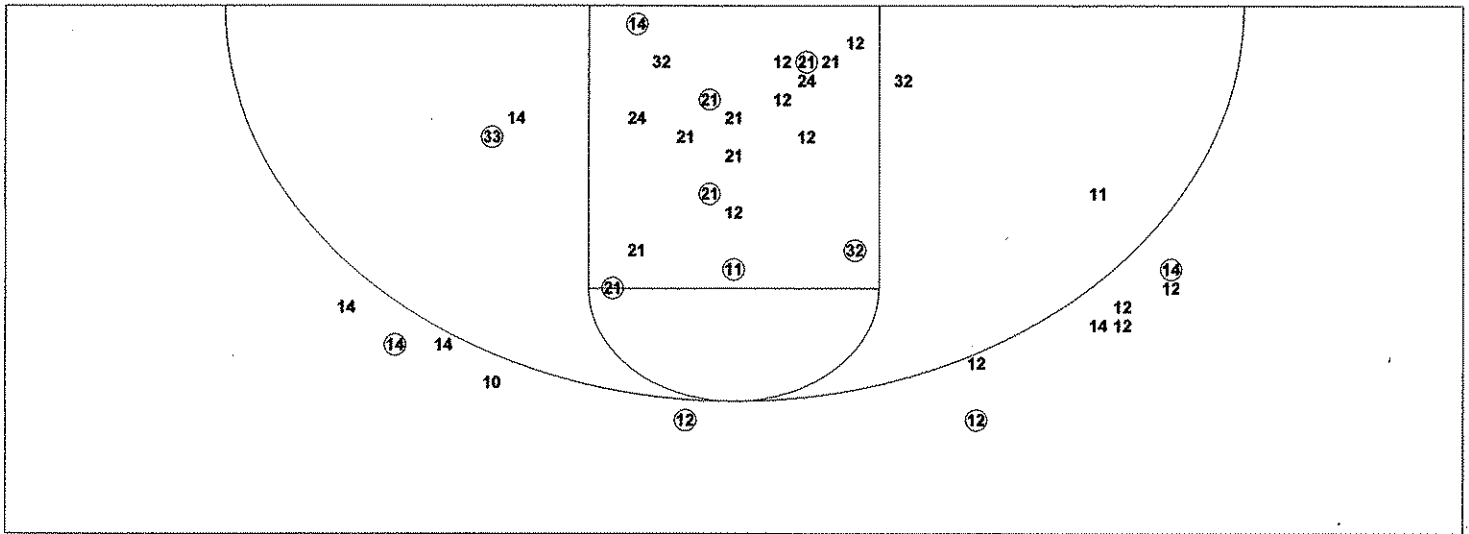
Scoring Range



2005 HOUCHEMS INDUSTRIES/KHSAA GIRLS' SWEET 16 - TEAM SHOT CHART for the Montgomery County Lady Indians

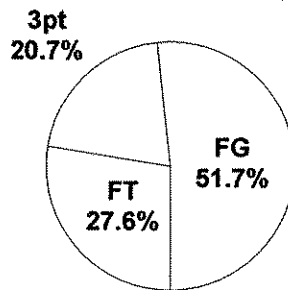
South Laurel Cardinals vs. Montgomery County Lady Indians

DATE: 03/25/2005 TIME: 2:30 PM CST SITE: Diddle Arena-Bowling Green, KY

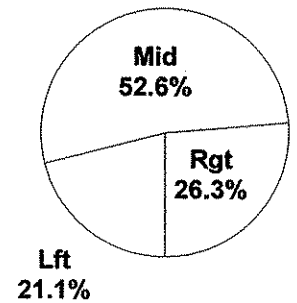


Shot Summary	M/A	%	PTS
3Pt FG	4/12	33.3%	12
2Pt FG	15/31	48.4%	30
Layups - L	2/2	100.0%	4
Layups - R	3/3	100.0%	6
Dunks	0/0	0.0%	0
Putbacks	2/2	100.0%	4
Overall Shooting	19/43	44.2%	42
Free Throws	16/27	59.3%	16
Total Points			58

Scoring Distribution

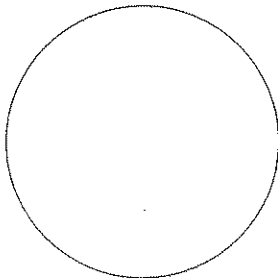


Scoring Locations



By Period	FG	FGA	FG%	3Pt	3PA	3P%	FT	FTA	FT%	PTS	ORB	DRB	TR	PF	AST	TO	BS	ST	P/S
1st Period	5	11	45.5	1	2	50.0	3	4	75.0	14	2	2	4	3	2	5	0	2	1.08
2nd Period	4	7	57.1	0	2	0.00	4	9	44.4	12	2	3	5	4	2	5	1	1	1.09
3rd Period	6	11	54.5	2	3	66.7	4	5	80.0	18	3	5	8	3	2	7	0	3	1.38
4th Period	4	14	28.6	1	5	20.0	5	9	55.6	14	3	5	8	5	2	4	0	4	0.78
Game	19	43	44.2	4	12	33.3	16	27	59.3	58	10	15	25	15	8	21	1	10	1.04

Scoring Breakdown



Scoring Range

